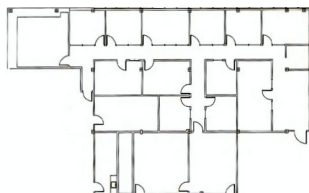




American Property Management

New Vacancy

American Property Management is pleased to send weekly exclusive previews of a vacancy we think you'd be interested in. There's more information regarding the building, promotions, and links to our website below. Our leasing department is looking forward to hearing from you!



Morrison Plaza

Portland - CBD

Space Details

Suite 300

Area: 4,623 SF

Rate: \$14.50/rsf/yr

Building Information

Morrison Plaza is a recently renovated four-story office building adjacent to I-405. The building features a surface-level parking lot, several

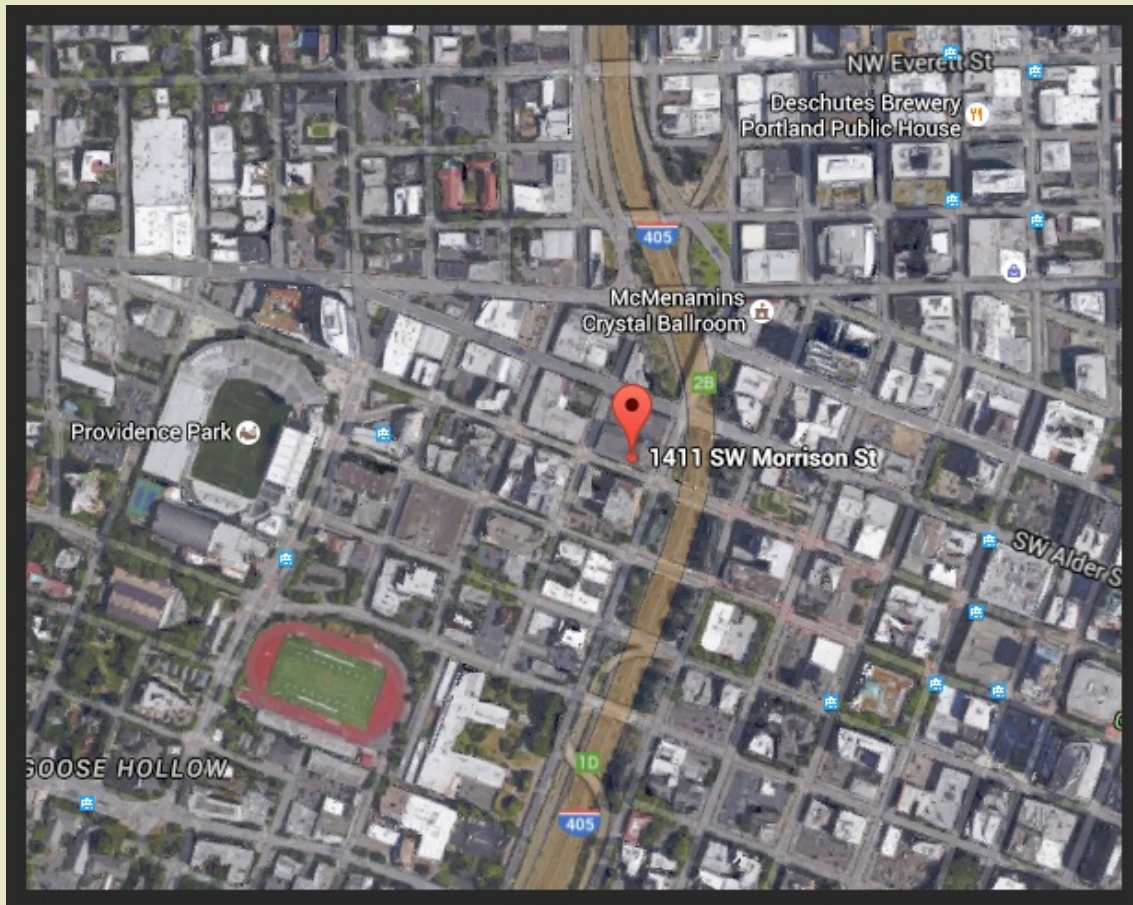
Full Service
Terms: 24+ months

nearby restaurants, shopping, and entertainment within walking distance, easy access to I-405, a common conference room, basement storage available, and is along on the MAX line.

[Email us for more info](#)

Call for a tour: 503-281-7779

[1411 SW Morrison St](#)
[Portland, OR 97205](#)



We've got Portland covered.

Check our website for all our vacancies!

Recent APM Transactions



New lease: Jantzen Complex

Multnomah County recently signed a lease in one of our close-in Eastside buildings. We have space all over the greater Portland area. Give us a call to get a tour soon!

Leased: 15,787 sq ft



Lease.apmportland.com

[Forward this email](#)

STAY CONNECTED WITH AMERICAN PROPERTY MANAGEMENT:



Copyright © 2013. All Rights Reserved.