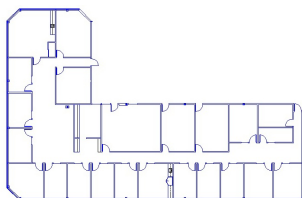




American Property Management

New Vacancy

American Property Management is pleased to send weekly exclusive previews of a vacancy we think you'd be interested in. There's more information regarding the building, promotions, and links to our website below. Our leasing department is looking forward to hearing from you!



Space Details

Gresham Corp Center

Gresham - Central City

Building Information

Gresham Corporate Center is a two-story office building

Suite 100

Area: 7,076 SF

Rate: \$18.00/rsf/yr

Full Service

Terms: 36+ months

located across the street from Gresham City Hall and one block from the Gresham Transit Center. The building is tucked away in a park-like setting and features shower facilities on the first floor, common conference room, elevator served, and is a short walk from the Gresham Shopping Square, with retail, healthcare facilities, a cinema, and several restaurants.

[Email us for more info](#)

Call for a tour: 503-281-7779

[1550 NW Eastman Pkwy](#)

[Gresham, OR 97030](#)



We've got Portland covered.

Check our website for all our vacancies!

Recent APM Transactions



New lease: Willamette Park Plaza

Hart Crowser, Inc. recently signed a lease in one of our SW Portland

buildings. We have space all over the greater Portland area. Give us a call to get a tour soon!

Leased: 11,024 sq ft



Lease.apmportland.com

[Forward this email](#)

STAY CONNECTED WITH AMERICAN PROPERTY MANAGEMENT: 

Copyright © 2013. All Rights Reserved.